



Comprehensive Video Analytics Solutions

Migration Guide: Vi-System to savVi

savVi 5.4 & 5.5

June 2020



Table of Contents

1	Overview	2
2	Prerequisites and General Guidelines	2
3	Migration Process	4
3.1	<i>Migration Preparation</i>	4
3.2	<i>Starting the Migration</i>	5
4	Migration Limitations & Configuration Changes	8
4.1	<i>Non-Supported Capabilities</i>	8
4.2	<i>Modified Configuration</i>	8
4.3	<i>SQL Database Replication</i>	9

1 Overview

This guide provides the required information for migrating Vi-System version 4.2 / Vi-Search version 2.1 to savVi versions 5.4 or 5.5.

Note: Vi-System must be first migrated to savVi 5.4. once completed, savVi 5.4 can be migrated to savVi 5.5.

Vi-System version 4.2 / Vi-Search version 2.1 will be referred to as “Vi-System” for the remainder of this document.

2 Prerequisites and General Guidelines

- Migration is only supported from the latest versions, with supported build numbers for Vi-System 4.2 being: 150, 195 and 250. In case you have older versions installed, you must first upgrade to the latest version.
- Agent Vi provides support for individuals who have completed Agent Vi certification, and specifically, savVi – “Installer” course. In order to register for certification, please go to [this page](#) and enter your details. The certification is online and free of charge, available 24/7.
- You must complete a “Request for Hardware & Software Specification”, found [here](#). List all components installed in the current system, to be supported following migration. Agent Vi will issue you the required specification. You need to confirm you have allocated the required hardware and software to support savVi.
- Identify and prepare a list of License Certificate Number/s provided to you by Agent Vi for referencing the license/s installed in your current system.
- Prepare a full database backup of the currently installed system. This backup will be used to restore the system to original status in case a rollback is required. For detailed instructions on how to perform the database backup, refer to the “Vi-System Installation & Administration Guide” available [here](#), chapter 3 – Database Management.
- If your Vi-System installation is distributed (i.e., not all components are installed on the same server,) you need to first apply the migration process on the Vi-Server machine/s (where Vi-LBS service is running) and only then migrate the other components (installed on other servers) to savVi. In case your Vi-System installation features a redundant server, first migrate the primary server and then the secondary server.

- Refer to section 4 below for details about specific limitations and configuration changes when migrating from Vi-System to savVi.

3 Migration Process

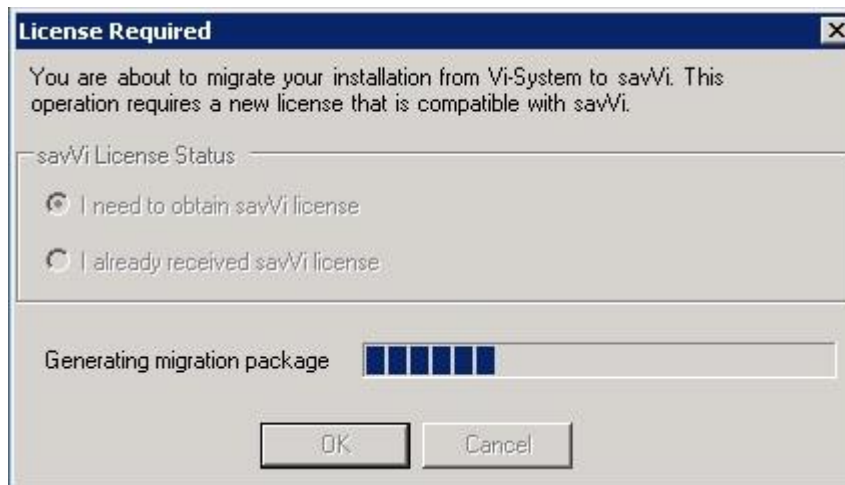
3.1 Migration Preparation

Perform the following actions (note: in case your deployment includes a redundant server, perform the following actions also on this server):

- Download “savVi Installer” from [this page](#).
- Download “savVi Installation & Administration Guide” from [this page](#). Review the document thoroughly.
- Run “savVi Installer” on the Vi-Server machine (where Vi-LBS is installed). The installer will identify an existing Vi-System installation and the following window appears:



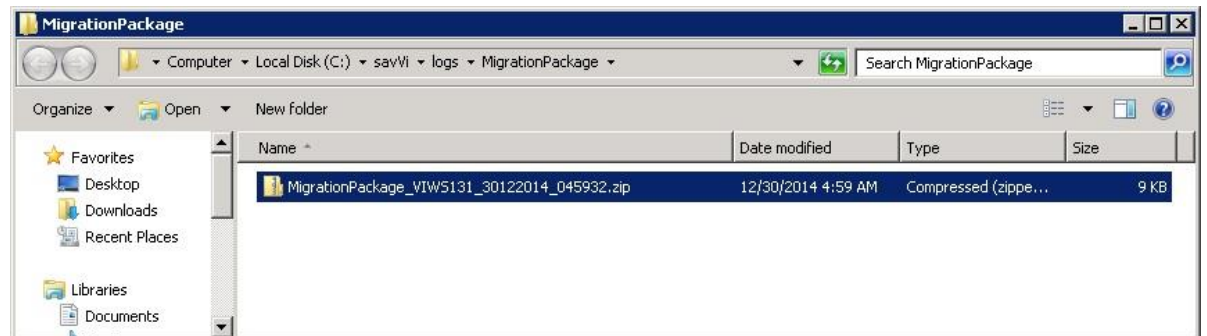
- Select “I need to obtain savVi license”.
- The following window appears:



- The installer is now creating a Migration Package. This package includes information retrieved from the currently installed system. Once the Migration Package is ready, the following window appears:



- Select “OK”.
- The installer terminates and points to the location of the generated Migration Package. The following window appears:

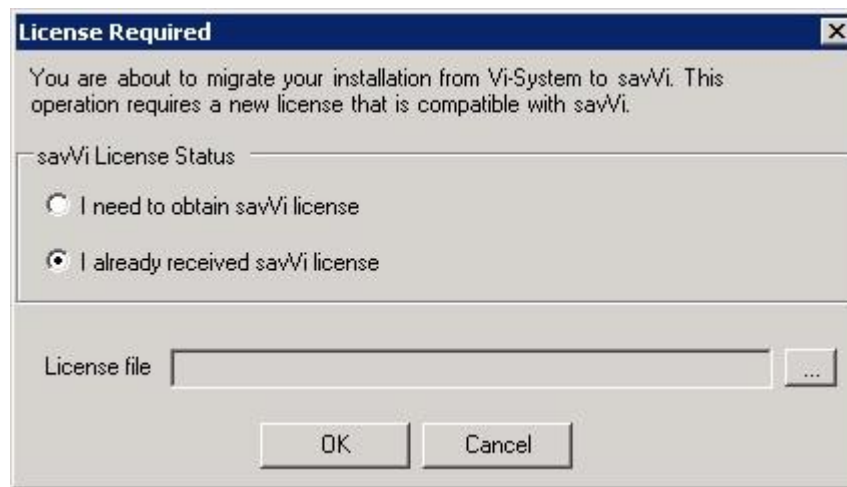


- Send an email to Agent Vi Customer Support as follows:
 - Email address: support@agentvi.com
 - Email Subject: Migration Package: Country, Company, Site
 - Email Body: List all License Certificate Number/s provided to you by Agent Vi for referencing the license/s installed in your current system
 - Attachments
 - Migration Package Zip file
 - Hardware & Software specification you have received from Agent Vi following the submission of the Request for Hardware & Software Specification form
- Agent Vi will review the planned Migration and prepare a Pre-Migration Analysis Report.
 - In case major issues are identified (examples: non-supported Operating System, no Software Upgrade Plan), the migration cannot be performed until the reported issues are resolved.
 - In case minor issues are identified (example: obsolete rule types) or no issues are found, the migration can be performed

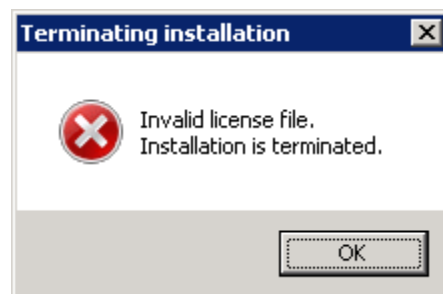
3.2 Starting the Migration

- Agent Vi will email you the Pre-Migration Analysis Report
- You must respond to the email with confirmation that you:

- Have reviewed the Pre-Migration Analysis Report
- Have available / installed the required Hardware and Software as per the specification provided
- Have completed the savVi “Installer” certification course
- Have completed the database backup of the currently installed system.
- Agent Vi will then issue a savVi License File matching the currently installed license/s.
- Save the savVi License file on your server.
- Run “savVi Installer” on the Vi-Server machine (where Vi-LBS is installed). In the following window, select “I already received savVi license”:

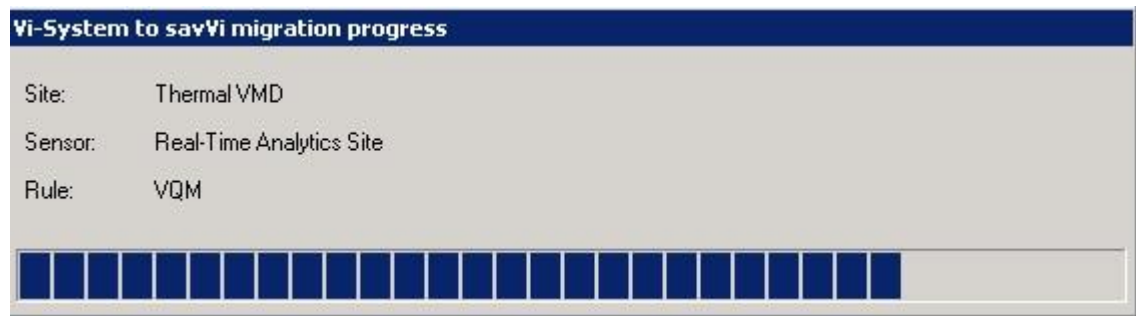


- Select the “...” button (on right side of “License File”) and upload the license file provided to you.
- The validity of the uploaded license is checked.
 - In case there is any error with the license, the following window appears and installation is terminated:



Contact Agent Vi Customer Support and report your problem.

- In case the license is valid, it is successfully activated.
- The migration process will then start. During the process, some windows will appear, for example:



Depending on the deployment size, the configuration migration may take some time.

- When migration is completed and there are configuration changes that require your attention, you will be prompted to review the Migration Report. See more details on potential configuration changes in section 4 below.
- Repeat the installation steps for all of the additional servers and workstations with Vi-System components:
 - Vi-AS
 - Vi-Agent Proxy (VAP)
 - Vi-Sentry and Vi-Search clients

Ensure installation is successfully completed on all other servers.

- In case the migration fails, restore the system to its original status using the backup database, and contact Agent Vi for assistance.

4 Migration Limitations & Configuration Changes

4.1 Non-Supported Capabilities

The following capabilities are not supported in savVi and are lost when migrating to savVi:

- Digital Input rules
- Digital Output actions
- Offline Video Search
- Handoff from Fixed to PTZ Camera
- PTZ 3D Masking
- Traffic obstacle rule
- Water vessel rule
- Measure stickiness rule
- Counter reset by value and event triggering by value for counting rules

4.2 Modified Configuration

The following configuration is modified when migrating to savVi and may require some manual modifications after the migration:

Vi-System Configuration	When Migrated to savVi	Required Operations
Detection Area for "Person" Rules	Migrated as-is	In savVi, the Detection Area should be limited to the floor/ground area. Review your rules and adjust accordingly
Shutdown Mask (green)	Mask is deleted	Reconfigure in savVi
Block Mask (yellow)	Masks from one rule per sensor are migrated to savVi as "Ignore Activity Mask". Masks defined on additional rules are deleted	Review the Ignore Activity Masks at the sensor level and adjust according to the operational needs
Store-to-Database interval for counting rules	The interval in savVi is fixed to 5 minutes	None
Distance Before/After for analytics rules with crossing lines	The two attributes are merged to a single attribute which is the average between the two	Review the rule setting and adjust the distance value if needed
Predefined Schedules at Site level and Custom Schedules at Rule level	The schedules will work the same as they did in Vi-System, and will become global (meaning that they are applied to all rules in the system)	Review the global schedules in savVi-Manager, under "Administrator Resources"

Vi-Search and Real-Time Analytics Metadata	Deleted	None
Bandwidth	The bandwidth required for analytics features to be sent from Vi-Agents to the Analytics Server (Vi-AS) is an average of 150 Kbps per sensor.	None

4.3 SQL Database Replication

In case you have deployed SQL Database Replication, stop the replication prior to migration. Following successful migration, reconfigure the replication as required