

# Guide to Powering savVi (ValerusSmart Analytics) on Vicon Valerus



---

## Contents

---

<b>1</b>	<b>Overview</b> .....	<b>2</b>
1.1	Glossary.....	2
1.2	Features Summary.....	2
1.3	About this Guide.....	2
1.4	Version Compliance.....	3
<b>2</b>	<b>Installation and Configuration</b> .....	<b>3</b>
2.1	ValerusSmart Prerequisites.....	3
2.2	Enabling Procedure.....	3
2.3	Credentials Settings for Services connecting to Valerus.....	4

# 1 Overview

## 1.1 Glossary

Agent Vi terminology	Vicon terminology
savVi (overall product)	ValerusSmart
savVi-Manager	Valerus SmartAction
savVi-Analyst	Valerus SmartSearch
savVi Statistics Reports	Valerus SmartReports
Vicon SDK for savVi	Valerus Player

## 1.2 Features Summary

A “Vicon-ized” version of savVi is available for Vicon Valerus VMS customers. The Vicon name for savVi is Vicon ValerusSmart. Agent Vi’s version of savVi cannot connect to Vicon Valerus VMS. The only version of savVi that can connect to Vicon Valerus VMS is Vicon ValerusSmart.

Integration of Vicon Valerus VMS with ValerusSmart offers:

- Real-Time Detections and Alerts (using Valerus SmartAction)
  - Events of interest are detected through real-time analysis of multiple video sources and sent to Valerus
- Video Search (using Valerus SmartSearch)
  - Recorded video is queried, and events of interest are located and extracted from the Valerus recording server
- Business Intelligence (using Valerus SmartReports)
  - Statistical information related to the behavior of people and vehicles is generated from the surveillance video, including traffic volumes, traffic trends and motion patterns. Generation of such data uses live video from Valerus connected cameras and recorded video from Valerus recording server

These capabilities are available for IP cameras and encoders powered by embedded Vi-Agent (“Optimized Deployment”, for greater scalability) and for cameras managed by Valerus but not powered by Vi-Agent (“Flexible Deployment” using Vi-Agent Proxy to pull live video from Valerus).

## 1.3 About this Guide

This guide explains how to connect ValerusSmart to Valerus VMS.

For further details and relevant software components please contact Vicon.

## 1.4 Version Compliance

- VMS – Vicon Valerus 18 R2 or higher
- SDK – Valerus Player 18 R2 or higher
- Analytics – Vicon ValerusSmart 5.4.0.116

## 2 Installation and Configuration

### 2.1 ValerusSmart Prerequisites

- Vicon Valerus VMS is installed and configured
- Ensure that Windows Desktop Experience feature is enabled on the ValerusSmart server
- Install Valerus Player on every server that runs ValerusSmart components

### 2.2 Enabling Procedure

To launch ValerusSmart:

1. Download and install ValerusSmart (available from Vicon)
2. Use Valerus SmartAction to configure the connection with the Vicon Valerus VMS server and to add cameras
3. Ensure that all ValerusSmart servers as well as all Valerus VMS servers are continuously time-synchronized by a single NTP server
4. Ensure that Valerus VMS is recording continuously (not triggered by motion)

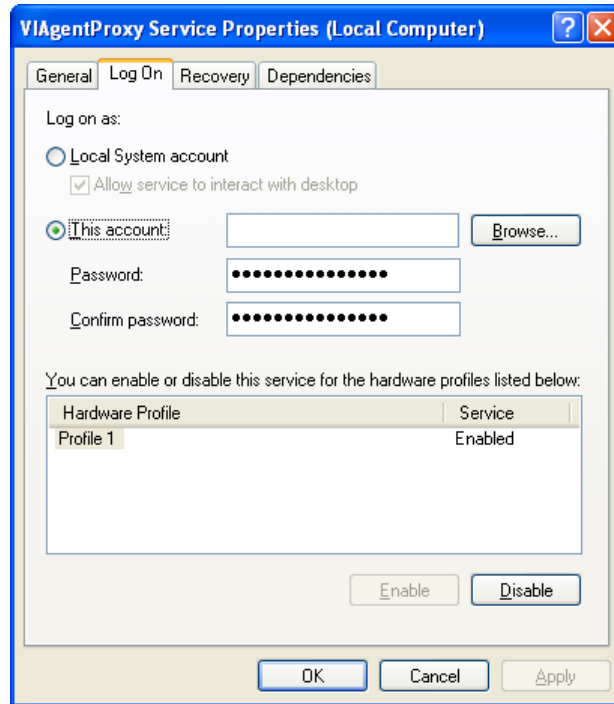
## 2.3 Credentials Settings for Services connecting to Valerus

The following ValerusSmart services should be configured with administrator permissions to enable login to Valerus:

- VIVMSManager Service
- VIAgentProxy Service/s

Apply these settings on each server where the above services are installed:

1. In the Properties screen of these services, select the **Log On** tab and check the “This account” radio button:



2. Click **Browse** and navigate to a user which has administrator permissions for this server
3. Click **OK** and restart the service



## Notice

Copyright © 2003-2018 by Agent Video Intelligence Ltd.

Agent Video Intelligence Ltd. holds the copyright to this manual. All rights reserved. No part of this publication may be reproduced or transmitted in any form or by any means without prior written consent from Agent Video Intelligence Ltd.

## Disclaimer

The information in this manual was accurate and reliable at the time of its release for this specific version. However, Agent Video Intelligence Ltd. reserves the right to change the specifications of the product described in this manual without prior notice at any time.

The customer should note that in the field of video there are a number of patents held by various parties. It is the responsibility of the user to assure that a particular implementation does not infringe on those patents. Agent Video Intelligence Ltd. does not indemnify the user from any patent or intellectual property infringement.

## Trademarks

Agent Vi™, Vi™, savVi™, savVi-Analyst™, savVi-Manager™, Vi-Agent™, Vi-Agent Proxy™ and Vi-Server™ are trademarks of Agent Video Intelligence Ltd.

All other proprietary names mentioned in this manual are the trademarks of their respective owners.



[www.agentvi.com](http://www.agentvi.com)  
[support@agentvi.com](mailto:support@agentvi.com)