

This guide explains how to quickly and simply install Agent Vi's analytics-enabling software module **Vi-Agent** in Axis Communications cameras.

For detailed information on Axis Communications edge devices that support Vi-Agent, contact Agent Vi.

See the **Vi-Agent Certification for the Axis camera**, available on request from Agent Vi, for the approved profile under which the camera is approved to run Agent Vi's full suite of analytics rules in conjunction with video streaming.

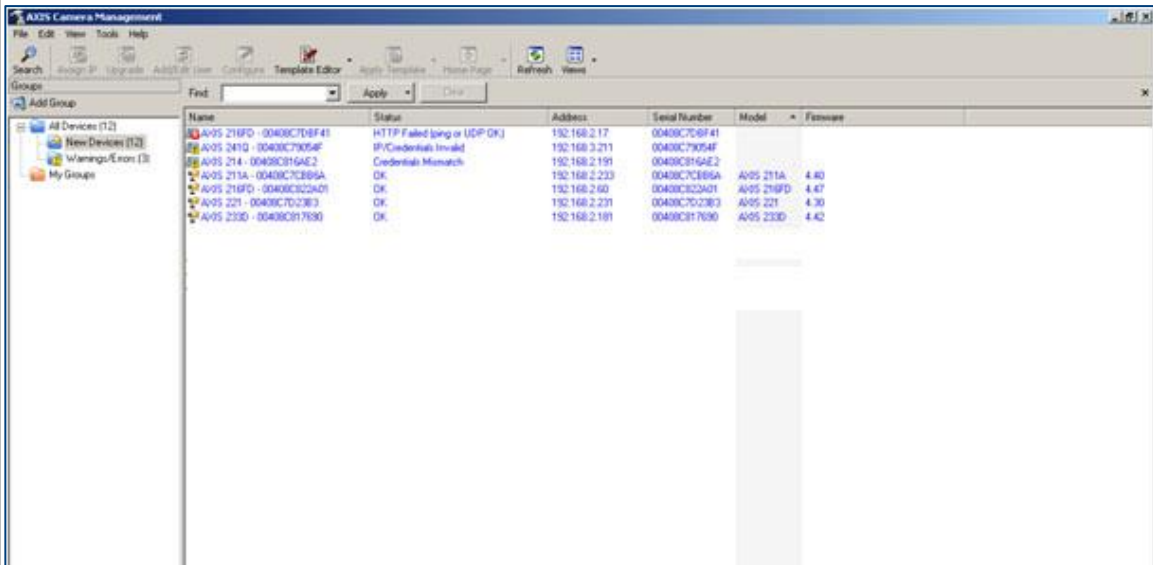
Use this guide as a *supplement* to Axis Communications documentation, downloadable from URL: http://www.axis.com/techsup/cam_servers/cam_mgmt_software/index.htm

1. Detect Network Cameras with 'Axis Camera Management'

- Open the **Axis Camera Management** tool to detect Axis cameras available on the network and to view camera information (e.g., IP addresses). Download the tool from URL:

http://www.axis.com/techsup/cam_servers/cam_mgmt_software/index.htm

Figure 1: Axis Camera Management



- Use the tool to verify that the **status** of all relevant cameras is **OK**.

2. Access the Axis Web-Based GUI

- Access the GUI by double-clicking on the camera in the **Axis Camera Management**, or by opening your web browser and pointing it to the device's IP address. Use the Axis **web-based GUI** to align the camera, determine settings, etc.

3. Install Vi-Agent Using the Installer

Agent Vi's installer installs the analytics-enabling module **Vi-Agent** in one or more Axis cameras each time it is run. The installer is controlled by command line parameters.

To install Vi-Agent:

(If you received the software as two zipped files):

1. Extract the Axis Installer *zip* file to a folder.
2. Extract the *zip* file containing the Vi-Agent binary to a folder.
3. Move the Vi-Agent binary file to the same folder in which the file *axis_camera_agent_installer.exe* is located.
4. Open a command line console (Start>Run>cmd) and change the current disk location to the path in which the exe file *axis_camera_agent_installer.exe* is located.

(If you're directly accessing the software folders):

5. Create a new folder and copy the files in both the Axis Installer folder and the Vi-Agent folder to it.
6. Open a command line console (Start>Run>cmd) and change the current disk location to the path to this new folder.

Single Camera

7. To install Vi-Agent on a single camera, define the following full command line (for example):
axis_camera_agent_installer.exe --ip=192.168.2.150 --agent=A4_ViAgent_420.9.1
 Default user name / password = **root**

Multiple Cameras

8. To install Vi-Agent on multiple cameras, open a new *txt* file in a text file editor (e.g., Notepad), list the IP addresses of the cameras on which to install Vi-Agent (one IP address per text line), name the file (e.g., *cameras.txt*) and close it.
9. In the command line console, define the following (example) full command line:

```
axis_camera_agent_installer.exe --ipfile=cameras.txt --username=user11 --password=mypass --agent=A4_ViAgent_420.9.1
```

Command Line Parameters Syntax

To receive help with command line parameters, run the command console prompt:

```
axis_camera_agent_installer.exe --help
-OR-
axis_camera_agent_installer.exe -h
```

Note that with the exception of -h, all other parameters are preceded by -- (2 dashes).

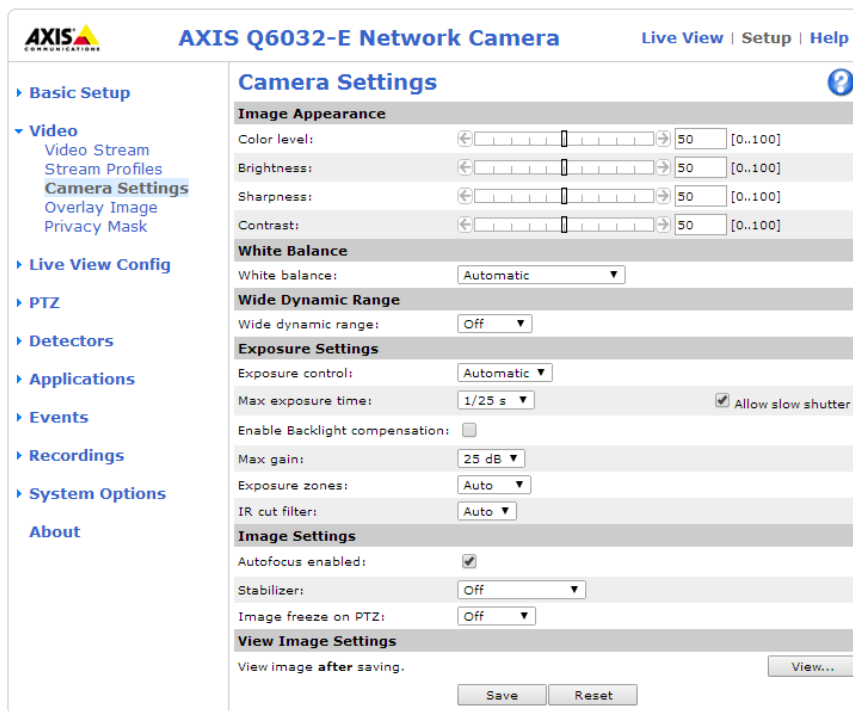
--ip	Identifies the IP address of the camera on which the Vi-Agent is to be installed. Example: --ip=192.168.2.150 . Note that <i>either --ip or --ipfile</i> must be provided for the installer to function, <i>not both</i> .
--port	Identifies the port of the camera on which the Vi-Agent is to be installed. Default = 80.
--ipfile	Identifies the name of the <i>txt</i> file listing the IP addresses of the cameras on which Vi-Agent is to be installed, one IP address per text line. Example: --ipfile=cameras.txt . Note that <i>either --ip or --ipfile</i> must be provided for the installer to function, <i>not both</i> .
--agent	Identifies Vi-Agent binary file to be installed in the camera(s). Example: --agent=A4_ViAgent_420.9.1 Note (1) that full or relative paths are supported. Note (2) that installing on multiple product families (e.g. ARTPEC-3 and ARTPEC-4) requires separate installer runs. For each model, a different Vi-Agent file name parameter must be set.

--username	(Optional) Provides the camera(s) a user name for access authorization. If not provided, the default root is used. Example: --user=user11
--password	(Optional) Provides the camera(s) a password for access authorization. If not provided, the default root is used. Example: --password=mypass . Note that on a new camera on which user / password aren't yet set, the installer sets them according to how they're defined in the command line (or the defaults).
--credfile	(Optional) If used, the installer ignores --username and --password and reads from file mycredentials.txt located in the same folder as the installer. The file's format is: username=example1 password=example2 The advantage is that in mycredentials.txt , users can insert <i>special characters</i> such as " & < > ^ and in the username and password, which cannot be inserted in --username and --password . (Optional) In addition to camera credentials, the user can set the Vi-Agent Portal credentials in a similar way to above parameters, using the following format: agentusername=example3 agentpassword=example4
--force_ptz	Set a value of 0 or 1. 0 (default) = Vi-Agent auto-detects if the camera in which it runs is PTZ or not. 1 = forces Vi-Agent to treat the camera as a PTZ.
--res_idx	Reserved for future use - ignore. Defines the Vi-Agent resolution index number. Default = 1.
--agentusername	(Optional) Provides the camera(s) a user name for access authorization to Vi-Agent Portal webpage. If not provided, the portal will be accessible without login. Username should be up to 8 characters.
--agentpassword	(Optional) Provides the camera(s) a password for access authorization to Vi-Agent Portal webpage. If not provided, the portal will be accessible without login. Password should be up to 8 characters.

4. Modify Camera Settings to Optimize Analytics

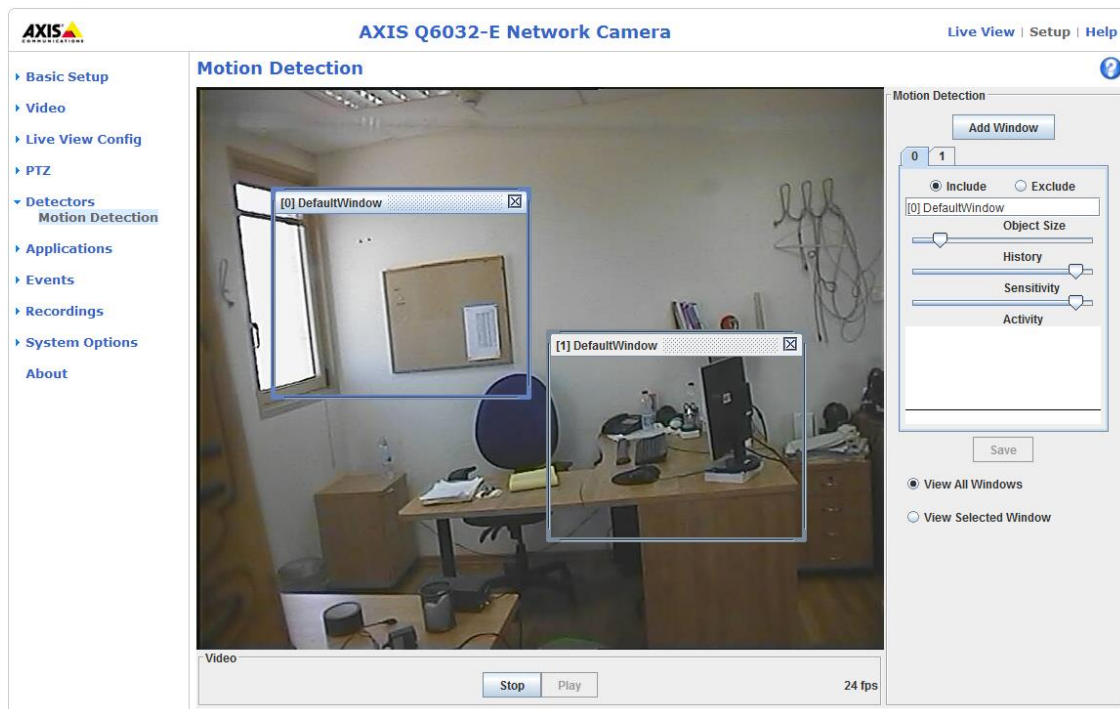
- To optimize analytics, modify these settings if present on your Axis camera:
 1. Open the camera's web-based GUI and from the **Setup** menu, open the **Video** submenu and choose **Camera Settings**; the following page opens:

Figure 2: Camera Settings Page



2. **Max exposure time** (under page section **Exposure settings**) should be set to no longer than 1/10 second.
3. Under main **Setup** menu, open the **Detectors** submenu and choose **Motion Detection**; the following page opens:

Figure 3: Motion Detection Page



4. Make sure that all Motion windows are removed.

5. Verifying that Vi-Agent is on the Axis Camera

→ Open your Web browser and define the camera address (get it from **Axis Camera Management**); immediately after the IP address, enter a colon : and 15029, as in the following format:

http://<agent IP address>:15029

Example: http://192.168.2.33:15029

→ if Vi-Agent is installed, the **Vi-Agent Portal** opens (see below):

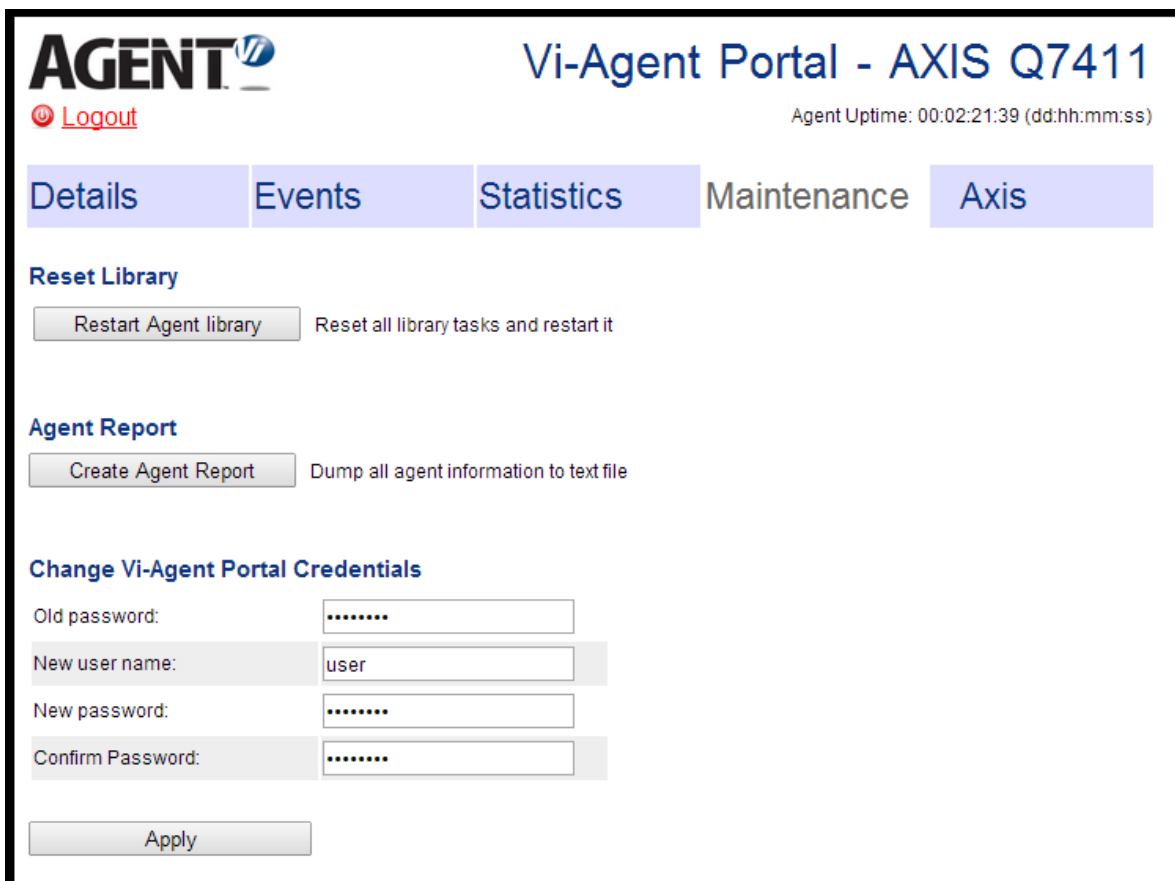
Figure 4: Vi-Agent Portal Page





- Verify the version.
- If the portal doesn't open, Vi-Agent isn't installed appropriately.
- In case the user choose to install a secured Vi-Agent Portal (using the **agentusername** and **agentpassword** parameters, as described above), he will get a **Login** page before the above **Details** page.

- User can change the Vi-Agent portal credentials by clicking on **Maintenance** tab, the following page will be open, enter the requested credentials and click Apply.

Figure 5 : Vi-Portal Maintenance Page



AGENT  **Vi-Agent Portal - AXIS Q7411**

 [Logout](#) Agent Uptime: 00:02:21:39 (dd:hh:mm:ss)

Details **Events** **Statistics** **Maintenance** **Axis**

Reset Library

Reset all library tasks and restart it

Agent Report

Dump all agent information to text file

Change Vi-Agent Portal Credentials

Old password:

New user name:

New password:

Confirm Password:

- After you finish verifying that Vi-Agent is installed well, you can logout from the Portal.
- Email support@agentvi.com in the event of an unsuccessful Vi-Agent installation.