

innovi - Immix Integration Guide

Version: 16-July-2021

Table of Contents

1. Overview	3
2. innovi - Immix Integration Workflow	3
3. Prepare Your Immix Environment for Integration	4
4. Define Integration Target in innovi	6
5. Define Integration Actions in innovi	7
6. Identify innovi Folders	8
7. Identify innovi Cameras	9
8. Test the Integration	10
9. Event Format in Immix	10
9.1. Detection Events Format	10
9.2. Health Events Format	11
10. Contact Agent Vi Support	13

1. Overview

innovi is Agent Vi's AI-powered, open architecture video analytics solution for security, safety, and business intelligence applications.

innovi eliminates the need for continuous monitoring of surveillance cameras and helps customers uncover otherwise hidden events, insights, and information. It automatically alerts to security and safety incidents in real-time, drawing your attention to an incident of interest and enabling effective responses, as events unfold.

The purpose of the integration is to receive and view innovi detected events or health events in the integrated system.

This guide serves as a reference point for a successful integration of innovi with Immix.

The integration process requires steps be performed in both the Immix system environment and in the innovi Portal.

2. innovi - Immix Integration Workflow

We are ready to start integrating your innovi account to your existing Immix deployment.

The following serves as a high-level workflow explaining the main steps to set up the integration.

1. **Prepare Your Immix Environment for Integration** - In order to monitor innovi folders and the detected events or health events created by these folders, you will need to create a corresponding site in Immix. Additionally, an innovi device is required to specify the origin point of innovi events.
2. **Define Integration Target in innovi** - The Integration Targets in innovi are the system wide definitions required for innovi to integrate with your system. You will define the endpoint that can receive the events sent by innovi.
3. **Define Integration Actions in innovi** - Integration actions are folder specific actions in innovi. These actions define what type of events are sent to the integrated system - whether it is **detected events** showing the video clip of a breached rule or **health events** alerting to health issues for camera or devices. The folders to be selected are those that hold the cameras and devices that you intend to monitor.
4. **Identify innovi Folders** - The innovi folders that you intend to monitor must be defined by a unique ID. These folders have corresponding sites in Immix and the unique ID is the S' number you documented for each of the sites.
5. **Identify innovi Camera** - The innovi cameras that you intend to monitor can be defined by a unique ID. This may be required for the event created from this camera to be associated with the correct camera in Immix.
6. **Test the Integration** - Integration test is a way to ensure that events for monitored folders are being received by the integrated system. When creating a test rule or test events, make sure you choose cameras under the monitored folder.
7. To learn more about event naming format, refer to Event Format in Immix chapter.

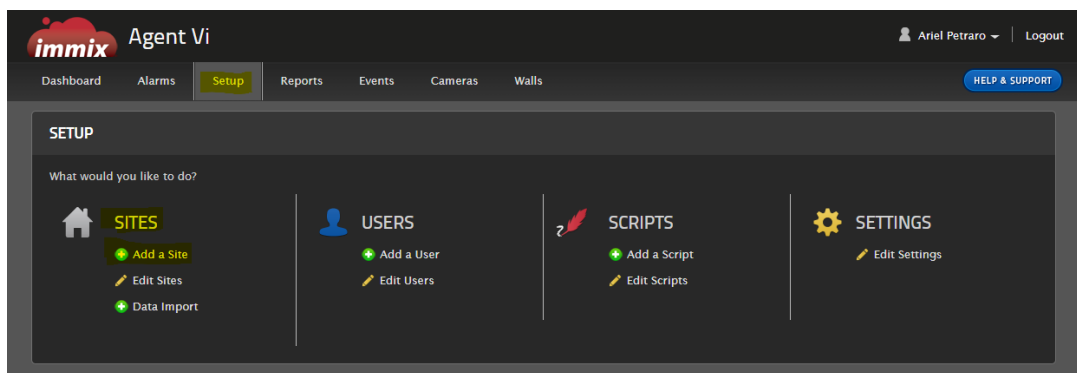
3. Prepare Your Immix Environment for Integration

Before you start:

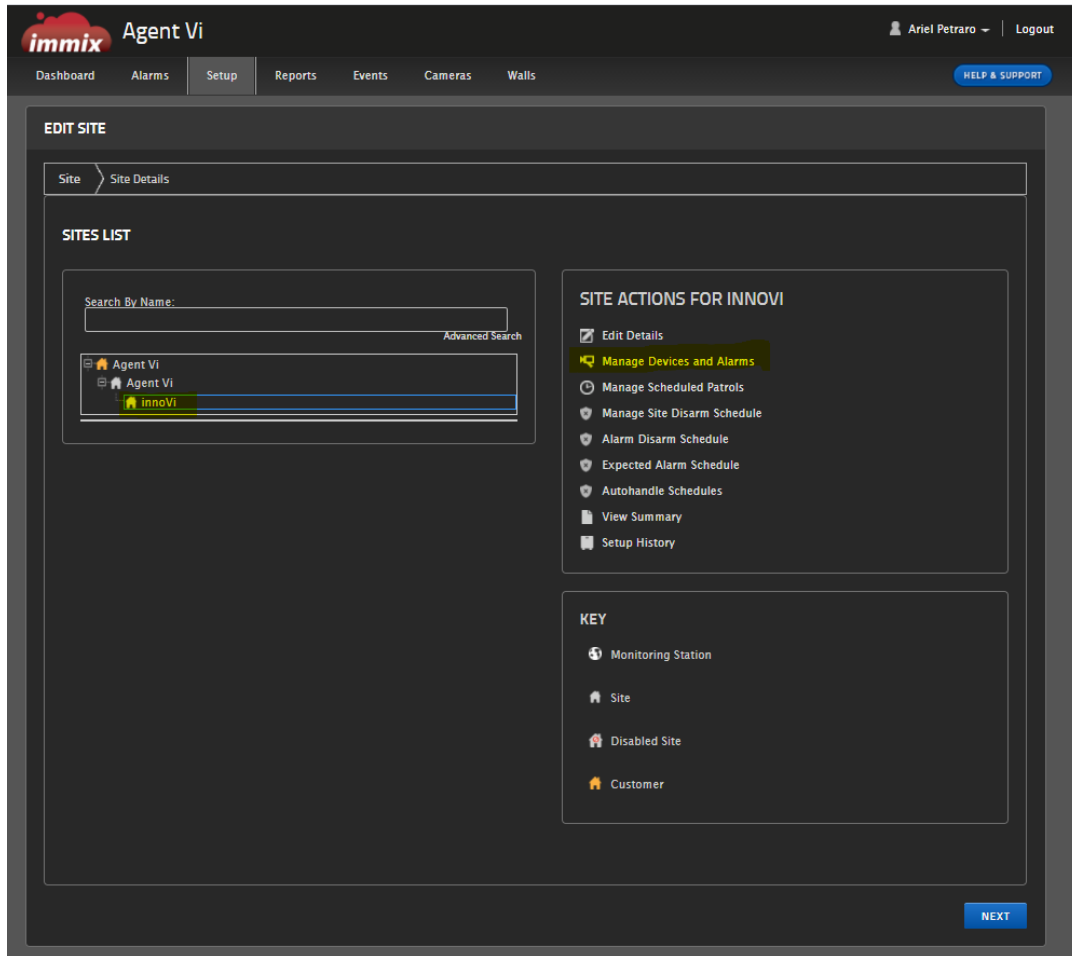
To monitor innoVi folders and the detected events or health events created by these folders, you will need to create a corresponding site in Immix. Additionally, an innoVi device is required to specify the origin point of innoVi events.

To prepare your Immix environment for integration with innoVi, do the following:

1. Port setup: port **465** or **587** should be open in the Immix firewall. As Agent Vi hosted solution is based on Google Cloud, these are the only ports supported by Google. Keep these ports open for innoVi incoming events
2. In Immix **Setup**, select **Add a Site** and fill in the relevant details. Perform this step for each of the innoVi sites you would like to monitor. You can also edit an already existing site.

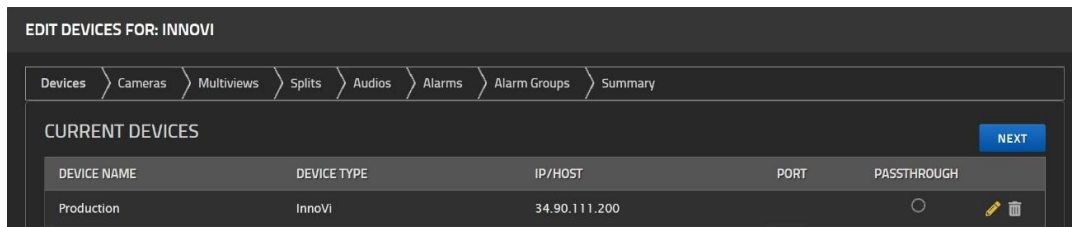


Example Site (innovi – marked in Yellow):



Select **Manage Devices and Alarms**

3. Add a device for innovi with the following details:
 - Device Type: **InnoVi**
 - IP/Host: **34.90.111.200** (this is the IP address of the Agent Vi innovi hosted service)
 - Port: leave empty



- For each of the sites you have created, locate and document the relevant unique system number (S' Number):
 - At the end of the site setup process, select **View Summary**. The Setup Report appears
 - Write down and keep the Identifier (S' Number). In this example, the identifier to keep is **599**

Setup Report for innovi

Devices

Production (InnoVi)

Identifier:	599
SMTP Server Address:	S599@ImmixaAlarms.com
IP Address:	34.90.111.200
Port:	465

4. Define Integration Target in innovi

Before you start:

The Integration Targets in innovi are the system wide definitions required for innovi to integrate with your system. You will define the endpoint that can receive the events sent by innovi.

To define the Integration Target in innovi, do the following:

- Log in to your innovi account
- From the top module bar, select **Settings**
- Select **Integration Targets**
- Click the **Add** button. The Integration Target screen appears
- Define the following:
 - Target name: Define a meaningful name such as Immix
 - Ensure toggle switch is Enabled
 - Type: Select **Immix**
 - Host/Port: Enter the Host IP in the first field and the Port number in the second field
 - Credentials: These are not required as the alarms to Immix use NoAuth (Immix accept these based on the IP whitelist and trusted domains @immixalarms.com)

The screenshot shows the 'Integration targets' configuration page in the innovi web application. The page has a dark theme. At the top, there is a navigation bar with the innovi logo and menu items: Administrator, Monitor, Investigate, Reports, and Settings. Below the navigation bar, there is a sub-menu with 'Audit logs', 'Integration targets' (highlighted), 'Device profiles', 'Users', and 'Usage Report'. A '+ Add' button is visible on the left. The main form area contains the following fields: a required text field for '*Target name', an 'Enabled' toggle switch (currently turned on), a 'Type' dropdown menu (set to 'IMMIX'), a 'Host/Port' text field with a small up/down arrow icon, and 'Credentials' fields for 'User' and 'Password'. At the bottom of the form are 'Cancel' and 'Save' buttons.

6. Click **Save**. The integration Target is defined and is listed in the Integration targets list

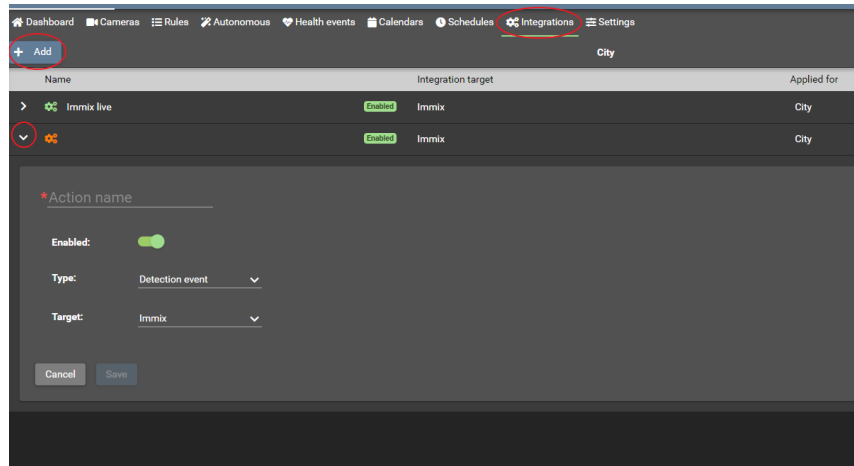
5. Define Integration Actions in innovi

Before you start:

Integration actions are folder specific actions in innovi. These actions define what type of events are sent to the integrated system - whether it is **detected events** showing the video clip of a breached rule or **health events** alerting to health issues for camera or edge devices. The folders to be selected are those that hold the cameras and edge devices that you intend to monitor.

To define the integration action in innovi, do the following:

1. Select the **Administrator** module
2. In the hierarchy tree, select the relevant folder, which holds the cameras you are monitoring (remember you prepared a corresponding site in Immix for this folder)
3. From the menu bar, select **Integrations** and click the **Add** button. A new Integration Action line entry appears
4. Expand the new integration action by clicking the arrow and define the following:
 - Action Name: Enter a meaningful name such as the type of events being monitored
 - Ensure toggle switch is Enabled
 - Type: Select whether integrating Detection event or Health event
 - Target: Select the relevant Integration Target that you previously created



5. Click **Save**

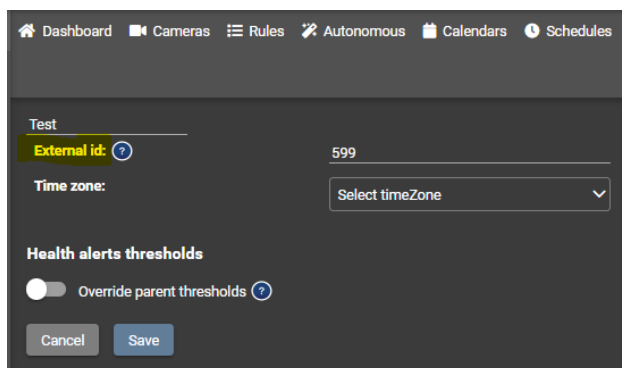
6. Identify innoVi Folders

Before you start:

The innoVi folders that you intend to monitor must be defined by a unique ID. These folders have corresponding sites in Immix and the unique ID is the S' number you documented for each of the sites.

To identify the innoVi folders, do the following:

1. Select the **Administrator** module
2. In the hierarchy tree, select the folder you are planning to monitor (remember you prepared a corresponding site in Immix for this folder)
3. From the menu bar, select **Settings**
4. Click the **Edit** button
5. In the **External Id** field, enter the S' number you documented in Immix for the corresponding site. In our example – it is 599



6. Click **Save**

7. Identify innovi Cameras

Before you start:

Each innovi camera may be defined by a unique ID. This may be required for the event created from this camera to be associated with the correct camera in Immix.

To identify the innovi cameras, do the following:

1. Select the **Administrator** module
2. In the hierarchy tree, select the **folder** you are planning to monitor
3. Select the relevant **camera**
4. Click **Edit**

The screenshot shows a 'Test Camera' configuration window with the following settings:

- Active:
- Type: CCD
- Live video resolution: Medium
- Minimum time between events: 30 Seconds
- Video stream source: HTTP(S)
- Stream info: video/x-h264, 1920x1080, 30 FPS
- External ID: External systems camera ID (highlighted)
- Recording:
- Send metadata:
- Sync time to stream:
- Enable model for unattended object detection:
- Maximum frame detections: 15
- Maximum frame rate: 8

Buttons: Cancel, Save (highlighted)

5. In the **External ID** field, enter the relevant Immix **Camera unique ID**
6. Click **Save**

8. Test the Integration

Before you start:

Integration test is a way to ensure that events for monitored folders are being received by the integrated system. When creating a test rule or test events, make sure you choose cameras under the monitored folder.

To test the integration for detected events, do the following:

1. As per the innoVi training instructions, define a test rule for a camera in each of the monitored folders
2. Ensure that events are created in innoVi under the Monitor module
3. Open your integrated environment and ensure that the same events have also been received

9. Event Format in Immix

The following sections list the innoVi event status and the corresponding status that appears in Immix for both detected events and health events.

9.1. Detection Events Format

innoVi Status	Immix Status
INNOVI_UNKNOWNNS	ObjectDetected
INNOVI_UNKNOWNNS_UNKNOWN	ObjectDetected
INNOVI_UNKNOWNNS_VEGETATION	ObjectDetected
INNOVI_UNKNOWNNS_CLOUD	ObjectDetected
INNOVI_UNKNOWNNS_OBJECT	ObjectDetected
INNOVI_PEOPLE	PersonDetected
INNOVI_PEOPLE_PERSON_STANDING	PersonDetected
INNOVI_PEOPLE_PERSON_ON_THE_GROUND	PersonDetected
INNOVI_PEOPLE_PERSON_OVERHEAD	PersonDetected
INNOVI_VEHICLE	VehicleDetected
INNOVI_VEHICLE_CAR	VehicleDetected

INNOVI_VEHICLE_CAR_COMPACT	VehicleDetected
INNOVI_VEHICLE_CAR_SUV	VehicleDetected
INNOVI_VEHICLE_BUS	VehicleDetected
INNOVI_VEHICLE_SCHOOL_BUS	VehicleDetected
INNOVI_VEHICLE_MINI_BUS	VehicleDetected
INNOVI_VEHICLE_CITY_BUS	VehicleDetected
INNOVI_VEHICLE_PICKUP_TRUCK	VehicleDetected
INNOVI_VEHICLE_VAN	VehicleDetected
INNOVI_VEHICLE_TRUCK	VehicleDetected
INNOVI_VEHICLE_TRUCK_SMALL	VehicleDetected
INNOVI_VEHICLE_TRUCK_MEDIUM	VehicleDetected
INNOVI_VEHICLE_TRUCK_SEMITRAILER	VehicleDetected
INNOVI_VEHICLE_TRACTOR	VehicleDetected
INNOVI_VEHICLE_NIGHT	VehicleDetected

9.2. Health Events Format

Cameras

Status is:

"TamperAlarm" - in blocked/saturated/dark, or "VideoLoss" in all other health events

Description is one of:

"Frame rate is too low (innovi camera ID nnnnnn)"

"Frame rate is too high (innovi camera ID nnnnnn)"

"Scene is blocked (innovi camera ID nnnnnn)"

"Scene is saturated (innovi camera ID nnnnnn)"

"Scene is too dark (innovi camera ID nnnnnn)"

"Communication failed (innovi camera ID nnnnnn)"

"General error (innovi camera ID nnnnnn)"

"RTSP error (innovi camera ID nnnnnn)"

"Incompatible video (innovi camera ID nnnnnn)"

"Resolution error (innovi camera ID nnnnnn)"

"No video (innovi camera ID nnnnnn)"

Edge Devices:

Status is: "SysteEvent"

Description is one of:

"High latency (innovi edge ID nnnnnn)"

"Overloaded (innovi edge ID nnnnnn)"

"No comm. with cloud (innovi edge ID nnnnnn)"

Agents (Edge software handling multiple cameras):

Status is: "SystemEvent"


Description is one of:

"No comm. with cloud (innovi agent ID nnnnnn)"

"High latency (innovi agent ID nnnnnn)"

10. Contact Agent Vi Support

We hope the information in this guide has been helpful. If you have any further questions, please contact the Agent Vi Support Department using one of the following options:

- From the innoVi Portal Support hub menu , select **Submit a Support Request**
- Fill in the innoVi [Support Request](#) form on Agent Vi's website
- Email innovi-support@agentvi.com