

# innovi Edge CI (Customer Installed) Installation Guide

Version: 11-Oct-2021

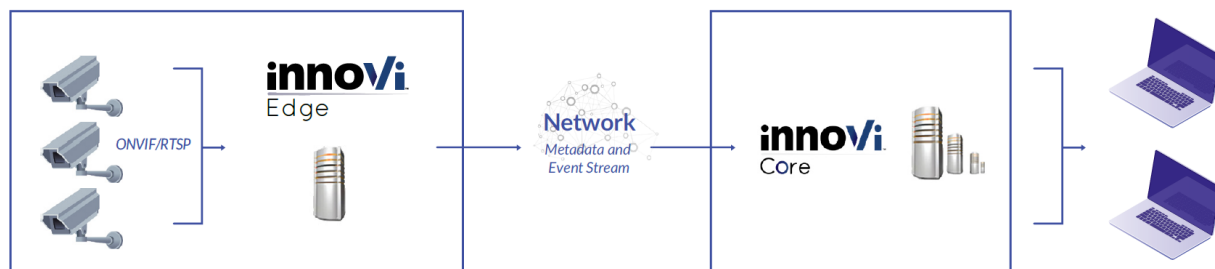
## Table of Contents

1. Overview .....	3
2. Networking Prerequisites .....	4
3. Usernames and Passwords .....	5
4. innoVi Software Installation Procedure .....	5
5. Adding the innoVi Edge device to the innoVi account.....	7
6. Adding ONVIF / RTSP video streams .....	9
7. innoVi Edge Settings .....	10
7.1. Endpoints .....	11
7.2. Password.....	11
7.3. NTP .....	12
8. Contact Agent Vi Support .....	13

## 1. Overview

**Note: any reference to innovi Edge™ in this document refers to innovi Edge™ CI (Customer Installed).**

innovi Edge™ enables the deployment of Agent Vi's software on a customer's hardware to connect ONVIF / RTSP fixed IP cameras from the camera's network to a centralized innovi Core. Agent Vi innovi system can have one or multiple innovi Edges that process the video stream, transforming it into Agent Vi's proprietary metadata before sending it to an innovi Core, which will then perform all central management and advanced analysis.



The steps for installing and configuring innovi Edge are as follows:

1. Install Agent Vi's software on innovi edge
2. Connect innovi Edge to the cameras' network and to innovi Core. This step is performed once, as part of the initial on-site installation of innovi Edge, using innovi Edge's local settings
3. Connect ONVIF / RTSP video streams to innovi. This step can be performed once innovi Edge is connected to the innovi Core and is comprised of configuration of each ONVIF / RTSP video stream. This step is performed using the innovi portal

## 2. Networking Prerequisites

### 1. Internet access for software installation

During software installation or updates, innovi must access various repositories on the internet (Linux / Docker hub) to download software components.

All downloads are over HTTP/HTTPS (outbound ports 80/443).

No inbound ports are required.

### 2. Firewall settings:

#### 2.1. innovi Edge to innovi Core

For cloud-based deployments, the site's firewall must allow innovi Edge to access the following endpoints (outbound traffic):

- \*.innovi.io:443

These are innovi cloud service addresses, required for the innovi Edge to continuously communicate with innovi

- \*.docker.com:443, \*.docker.io:443

These addresses are required when connecting the innovi Edge to your innovi account and when performing innovi Edge software upgrades.

The Docker address redirects traffic to different IP addresses and third party DNS names (for example cloudfront.net ). The addresses being used are beyond Agent Vi control. See the following related docker forum response: <https://forums.docker.com/t/adding-rules-to-the-firewall-for-docker-pull-commands/38206>

It is advised to verify with the site's network administrator that these requirements are fulfilled, prior to arriving at the site

#### 2.2. innovi Edge to innovi Video Sources

If there is a firewall between the innovi Edge and video sources, ONVIF / RTSP ports should be open.

Default ports:

- ONVIF: 80 (unencrypted), 443 (encrypted)
- RTSP: 554

### 3. DNS server:

innovi Edge requires access to a DNS server. In case there is no DNS server in the network, access to external DNS must be enabled (for example, to Google's DNS [8.8.8.8:53](https://www.google.com/dns/))

## 3. Usernames and Passwords

Make sure you have the following credentials:

1. **innovi Edge local** username and password:

The local username and password are only used to configure innovi Edge's local settings.

The default local username is 'agentvi' while the default local password is 'PASSWORD'. Once innovi Edge is connected to the innovi account it is strongly advised to change the default password to prevent unauthorized access to innovi Edge.

2. **innovi** username and password:

To connect innovi Edge to a specific innovi account and start adding ONVIF / RTSP devices, you will need an innovi account username and password.

Note: If you do not have the credentials above, please contact your innovi account administrator

## 4. innovi Software Installation Procedure

Lines with `$ xxx` format show Ubuntu OS commands to be entered.

1. Open SSH connection to your innovi Edge server
2. Verify server resources

```
$ sudo -i
```

Enter password

- OS version

```
$ lsb_release -a
```

Ensure the OS version is Ubuntu 18.04

- CPU Model

```
$ lscpu
```

Ensure the CPU model and number of CPU(s) match the required specification. The line starting with CPU(s) shows the number of logical cores available

- Memory

```
$ free -m
```

Ensure the available memory matches the required specification

- Storage

```
$ lsblk
```

Ensure the available storage matches the required specification

3. Browse to home folder

```
$ cd ~
```

4. Download the installation script

```
$ wget https://tinyurl.com/yczxeeq9 --trust-server-names
```

5. Make the script executable:

```
$ chmod +x custom_edge_installer.sh
```

6. Run the installation script

```
$ sudo bash ./custom_edge_installer.sh
```

7. The available network interfaces are displayed. Identify your active network interface name (mapped to the IP of the Edge Device) and enter its name.

*NOTE: If your edge machine is configured with multiple network interfaces for redundancy / high availability purposes, contact Agent Vi Customer Support for further instructions*

8. In case the installation script exits at any point with an error, contact Agent Vi Customer Support with the error output

9. Wait until message **Done.** is displayed

10. Check the installation status

Two docker containers are included:

- Device Manager
- Analytics Service

```
$ docker ps -a
```

Output example:

CONTAINER ID	IMAGE	COMMAND	CREATED	STATUS	PORTS	NAMES
ca031efe4deb	agentvi/innovi-device-manager:2.1.1244	"./innovi-device-man..."	2 hours ago	Up 2 hours		innovi-device-manager

Device Manager container should be running. The Analytics Service container will run once the innoVi Edge is added to the innoVi account

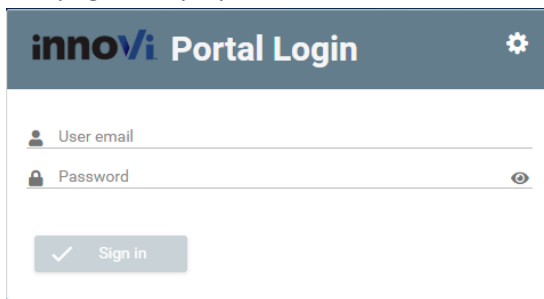
11. Your innoVi Edge is now ready to be added to your innoVi account

## 5. Adding the innovi Edge device to the innovi account

The innovi Edge device must be connected to a network that allows constant access to the innovi Core endpoints.

**Note: the innovi edge can be added only to a dedicated folder and not to the account root folder. Ensure you have created a folder to which the innovi Edge will be added to.**

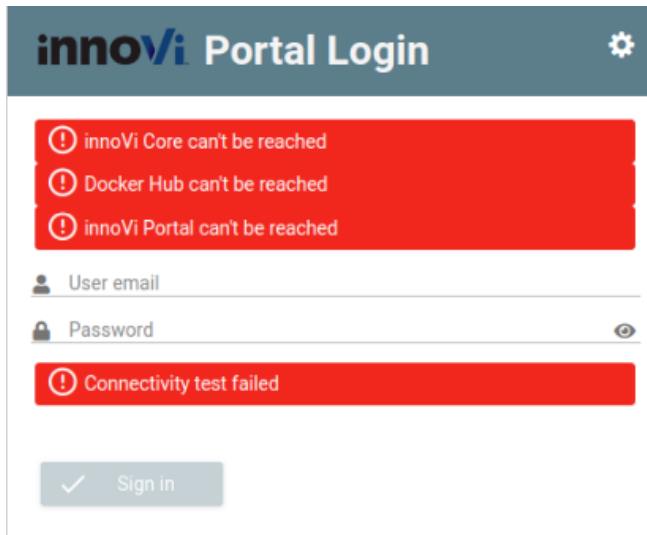
1. Using your web browser, navigate to innovi Edge Device IP address. The innovi Edge Device webpage is displayed:



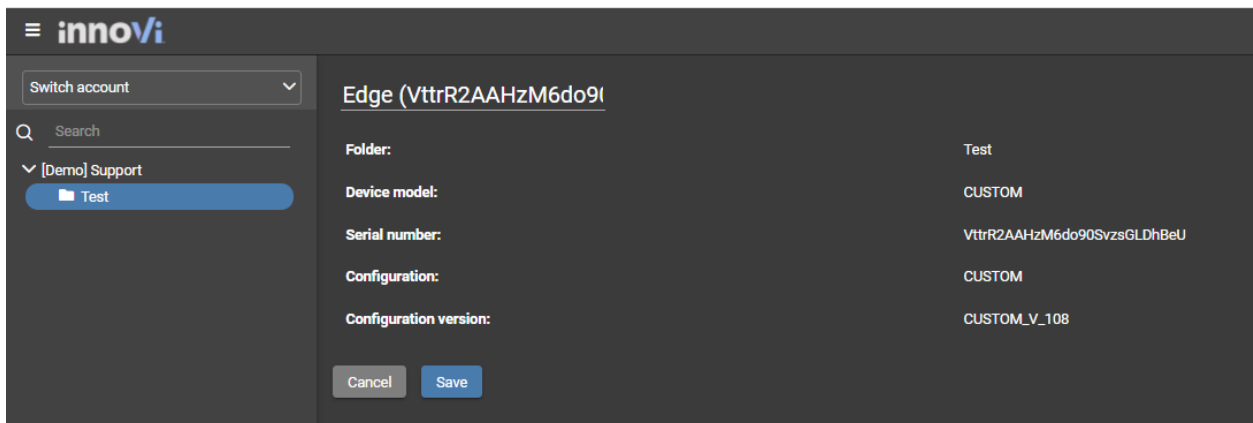
2. Use your innovi username and password to login and add the innovi Edge device to the innovi account.

**Note:**

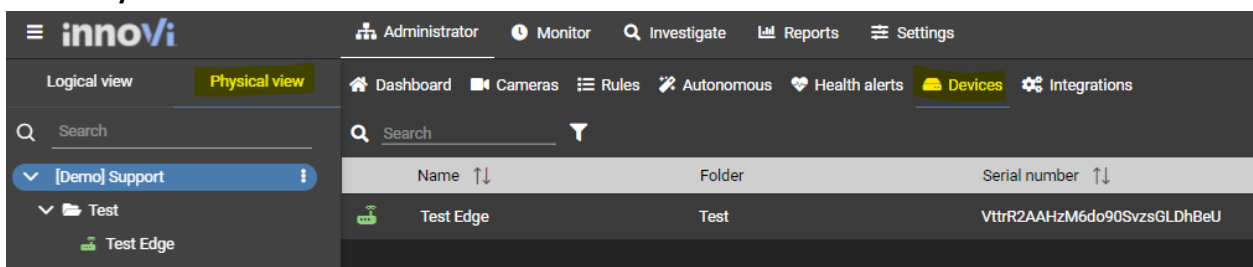
The innovi Edge Device includes an automatic **connectivity test** feature that tests innovi Edge Device ability to connect to the required innovi Core cloud endpoints over the internet. If one or more of the required endpoints is inaccessible, the innovi Edge Device webpage will show an error message indicating which endpoints cannot be reached. Please configure the firewall to allow outbound traffic from the innovi Edge Device network to all listed innovi Core endpoints.



- Once signed in, a list of available folders is displayed (the innovi account administrator grants access privileges to specific folders). Select the folder to which you want the innovi Edge Device to be added to:



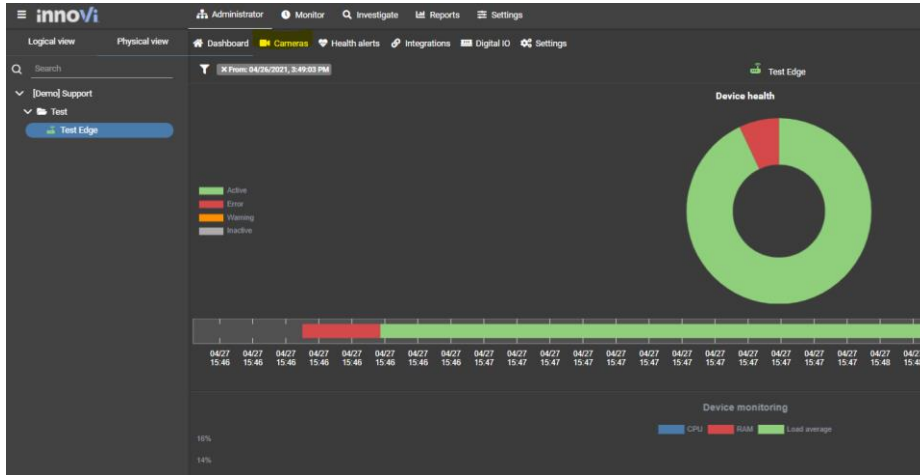
- Once the folder is selected, the innovi Edge will be added to the list of devices
- Select **Physical Devices** → **Devices** tab to view the list



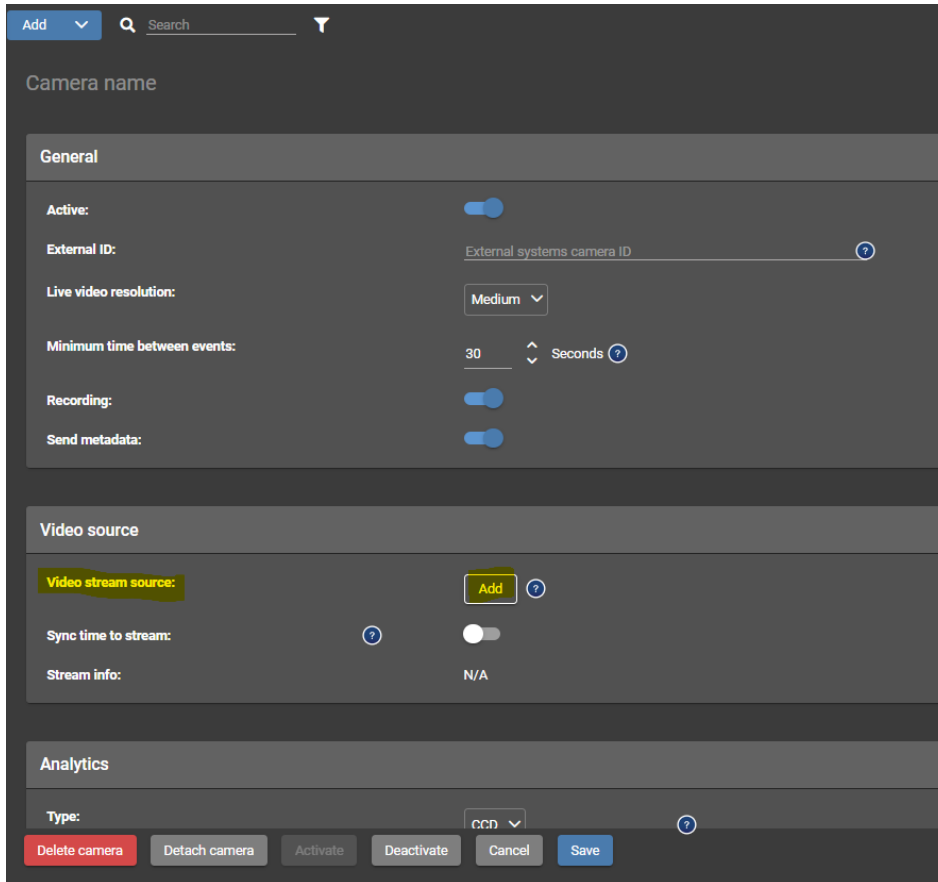
- Once the edge device is fully installed, the Edge' icon is turned green. The device is now ready to add cameras



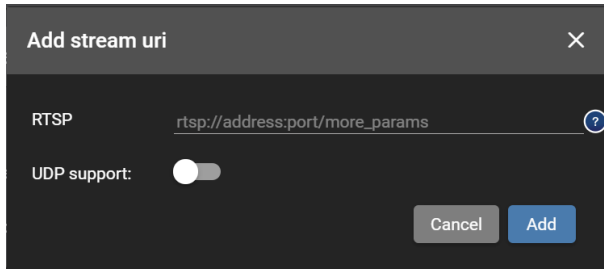
## 6. Adding ONVIF / RTSP video streams



1. Click the innovi Edge
2. Click **Cameras**
3. Click the **Add** button to add a camera



In the **Video stream source** field, click the **Add** button



Enter the RTSP/ONVIF camera URL, click **Add**

Click **Save**

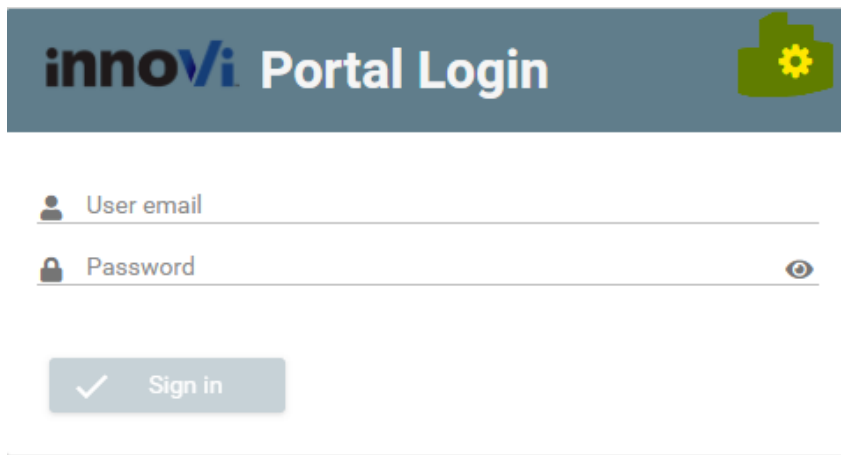
The camera is added, and live video should be available

## 7. innoVi Edge Settings

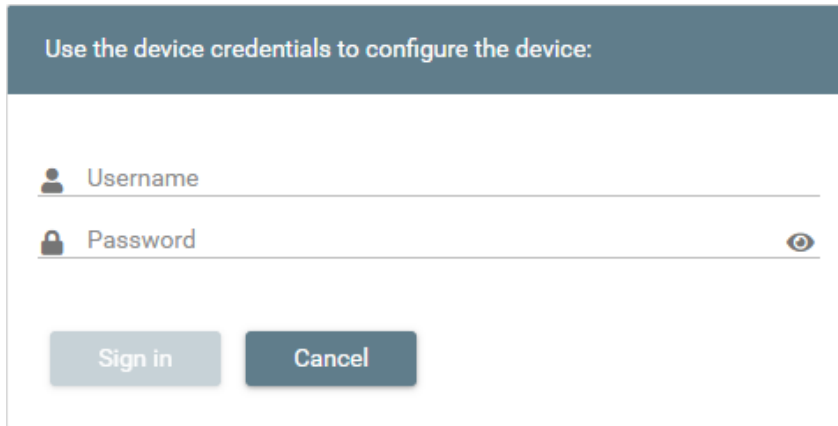
innovi Edge is configured with some default parameter. The following chapters explain how to change them.

Make sure innoVi Edge is connected to the innoVi account: login to the innoVi account and make sure innoVi Edge appears in the list of devices .

Using your web browser, navigate to innoVi Edge IP address. The innoVi Edge webpage is displayed. Click the marked wheel icon:



In the opened window, populate default username (agentvi) and a default password (PASSWORD).



Use the device credentials to configure the device:

Username

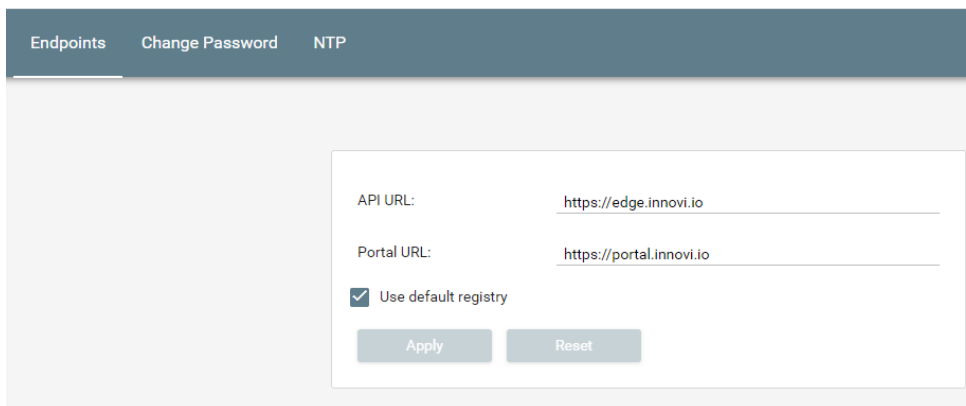
Password

Sign in Cancel

Once login is successful, select the relevant tab.

## 7.1. Endpoints

innovi Edge is configured with default Endpoints settings, to access the Agent Vi hosted service.



Endpoints Change Password NTP

API URL:

Portal URL:

Use default registry

Apply Reset

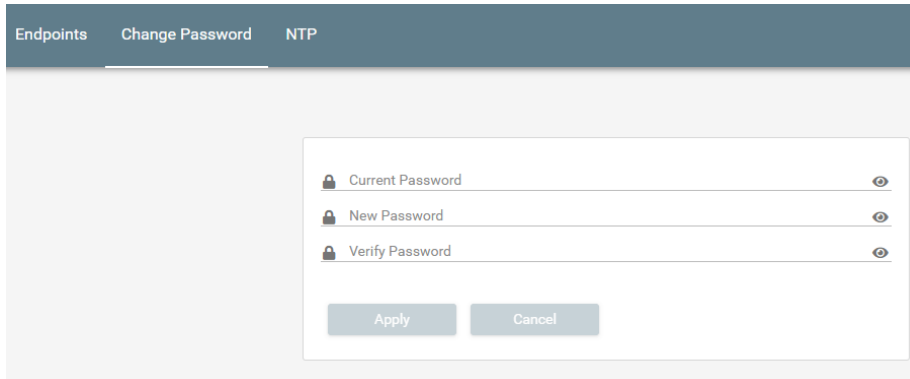
**To support a customer hosted deployment, contact Agent Vi for changing the Endpoints settings**

## 7.2. Password

innovi Edge is configured with a default username (agentvi) and a default password (PASSWORD).

It is strongly advised to change the default local password once innovi Edge is connected to the innovi account. This will prevent unauthorized access to the innovi Edge local settings.

1. Select the **Change Password** tab



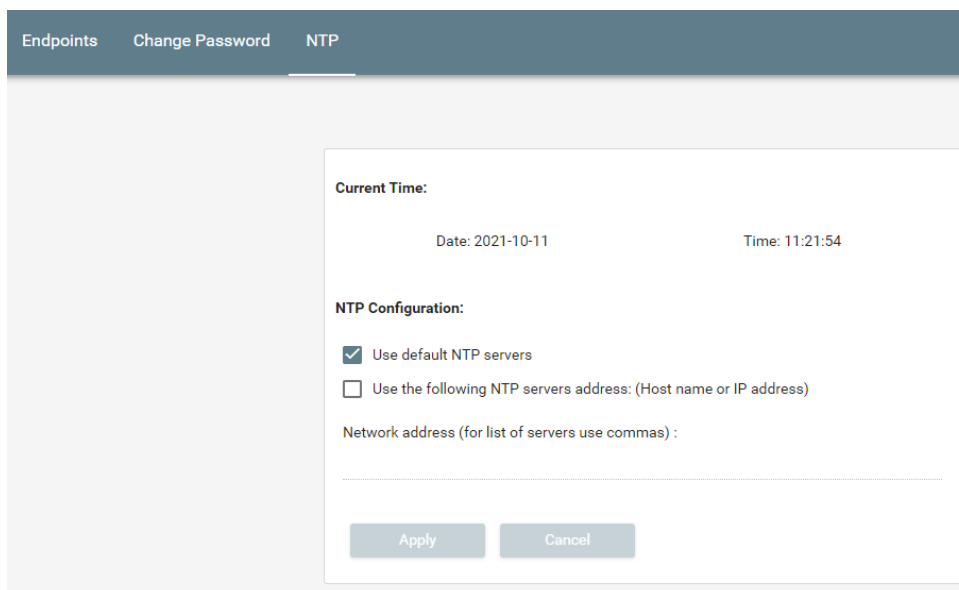
2. Set a new password and retype it
3. Click **Apply**

**Note:**

In case you forget the innoVi Edge revised local password, you can log into innoVi account, open the innoVi Edge page, go to the 'Settings' tab and reset the password to the default settings.

### 7.3. NTP


Change device NTP configuration as follows:



The default NTP configuration is set to sync time with the Ubuntu operating system installed on the device.

Mark the **Use the following NTP...** checkbox to select a different NTP server/s.

## 8. Contact Agent Vi Support

- From the innoVi Portal Support hub menu , select **Submit a Support Request**
- Use the innoVi support form on Agent Vi's website: <https://support.agentvi.com/support/innovi-request/>
- Email [innovi-support@agentvi.com](mailto:innovi-support@agentvi.com)